



Friends of the Cardall Collection

Annual General Meeting
Congregational Church Hall
Sept 27th 2016



Agenda

- Apologies
- Chairman's report
- Presentation of accounts
- Election of management committee
- Any other business
- Browse, chat & a drink!



Chairman's Report

- **10th Anniversary year**
 - Party to celebrate
 - Going from strength to strength
 - Funds are healthy, although not excessive!
 - Visitor numbers increasing – access is an issue
 - One from North Carolina last week!
 - Some great comments in the visitors' book
 - Word is spreading
 - Many fascinating items being offered
 - Some great loan contributions for 2016 exhibitions
 - Donations – items, deeds, photos etc.
 - Other groups becoming engaged
 - Collaboration - local, further afield (Lincolnshire Coast Light Railway!), Our Warwickshire
 - Calls from the BBC – interviews, research
 - Sparking new research and publicity opportunities



Chairman's Report ...

- **2015 Achievements**

- **2 more successful Exhibitions**

- “Keep the Home Fires Burning” - 300
- “Cementing Relations” – 250 + 45 Cubs
 - Terrific stewarding work by Chris Holding
 - Financial Support from



- **Centenary Archive Project**

- Steady stream of contributions
- Massive amount of work
 - Val Brodie, Chris Jerome

- **Great demand for Val Brodie's talks – almost overwhelming**

- **New Volunteers**

- Transcribing “olde english” – Glynis Dunhill
- Stewarding – James Cardall
- Hopefully a teenager from Southam School



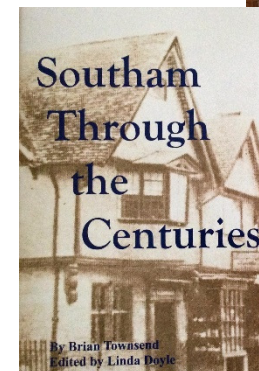
Chairman's Report ...

- **Getting the message out**
 - Stockton Afternoon Tea – “Keep the Home Fires Burning”
 - Leamington Local History Fair
 - Invitation to “Warwickshire Words”
 - Tithe Lodge resident photos, opening display invite
 - Tithe Lodge talks – daytime, evenings?
 - Our Warwickshire collaboration – Tithe Lodge
 - Involving others – Glen McBernie

- **“Southam Through the Centuries” book**

- Brian Townsend reprint, Linda and Pam

- **2017 Calendar**
- **German students – again**
- **John Turner - again**
- **Many talks to a variety of groups**



Chairman's Report ...

- Unusual unexpected visitor



Chairman's Report ...

- **Tithe Place – still an unknown quantity**
 - **No date for a move**
 - Building is occupied !
 - Library is operational !
 - Police ??
 - Many apartments occupied, but not all !
 - **Were advised to extend Vivian House lease by 12 months back in Dec 2015**
 - **Have written to Southam Town Council**
 - **Have written to Stratford District Council**
 - Cannot get any dates or figures
 - Except legal fees are likely to be of the order of £1,500!
 - Have advised SDC we need info by mid-Nov at latest
 - **Tithe Place is probably only suitable for display space**
 - Will need additional storage space – 40%



Chairman's Report ...

- **Web Site**

- Take a look
- www.southamheritage.org
- More feedback welcome
- Facebook page

- **Southam History section**

- Could you write an article?
 - We'll help

Southam Heritage Collection
Preserving Southam's past for the future

Donate or volunteer today!

Home Page About Us Contact Us Getting Involved Publications **Southam History** Events Illustrated Talks Archives

Southam Heritage Collection

The Southam Heritage Collection is a charity dedicated to preserving and promoting the local history of Southam and the surrounding villages.

It is the custodian of over 10,000 items including 5,000 objects, 3,500 photographic negatives and 450 glass plate negatives.

The Collection receives no on-going support from any outside commercial or government body and is solely dependent on donations, subscriptions and support from members of the public and local businesses to cover its running costs.

If you can provide any support, either financial or skills, you would be most welcome.

Membership

Join the Friends of the Cardall Collection and help support our work. Click [here](#) or on the picture for details.

Volunteer

Want to help with our work? There are many possible ways you could contribute. Click [here](#) or on the picture for details.

Exhibition
Cementing

Centenary Archive
Southam Heritage Collection

Talks

Latest News
Annual General Meeting

Chairman's Report ...

- **New things keep coming up**
 - Bottle dump
 - Stowe Drive extension
 - You never know what is under your feet
 - Talk to your neighbours
 - Get them excited about local history
 - Lets get folks involved
 - Thanks to Alison Wilkins and Chris Holding



Chairman's report ...

- **2017 Plans, still work in progress**
 - WW1 Centenary Archive work continues – Tuesday AM
 - Spring Exhibition – Centenary of Southam VAD Hospital
 - “Caring for the Wounded”
 - Summer Exhibition – Southam's Public Houses
 - Southam Local History Fair – May, St James
 - Another Ramblers walk with local history content
 - Travelling version of “Cementing Relations”
 - Probably Leamington LHS Fair, Talks in Southam, German Students, John Turner, Evening group talks, Cardalls Corner, Web stories etc

Accounts



SOUTHAM HERITAGE

INCOME AND EXPENDITURE ACCOUNT FOR THE YEAR ENDED 31st AUGUST 2016

INCOME

Sales	1104.47
Subscriptions	620.00
Donations	638.70
Walks & Talks	704.00
Fundraising Activities	210.00
200 Club ticket sales	735.00
Grant Funding	5000.00
Exhibition Income	0.00
Bank Deposit Interest Received	3.54
Gift Aid Received	1.38
Business Sponsorship (Calendar)	315.00
Sales Income Paid into Lloyds Account	16.00
Petty Cash Transfer in from Sales Receipts	7.50
Bank Error Refund	8.00
	<u>9,363.59</u>

Balances @ 01/09/2015

Bank (HSBC Current)	5,178.64
Bank (HSBC Deposit)	5,002.76
Bank (Lloyds)	0.00
Petty Cash	42.83
	<u>19,587.82</u>

EXPENDITURE

Exhibits & Displays	507.19
Equipment	105.99
Service Charges	2326.02
Rates	377.72
Water Rates	0.00
Electricity	179.26
Building Maintenance	0.00
Sundries	49.52
Insurance - Contents / Public Liability	328.61
Fund Raising Expenses	455.00
Membership Fees	12.00
Advertising & Promotion	244.25
200 Club	170.00
Legal Fees	240.00
Bank Error	8.00
	<u>5,003.56</u>

Balances @ 31/08/2016

Bank (HSBC)	9,542.88
Bank (HSBC Deposit)	5,006.30
Bank (Lloyds)	16.00
Petty Cash	19.08
	<u>19,587.82</u>

AMOUNTS HELD FOR SPECIFIC PROJECTS OR PURCHASES

Environmental Monitoring Project	194.97
Trevor Rogers Memorial Donation	1,000.00
Val Brodies Talks Income for WW1 Book	650.00
Cemex Support Grant (remaining balance)	2,807.77
	<u>4,652.74</u>

In accordance with instructions given to us, we have examined the books, records, information and explanations supplied to us, and can verify that no material errors have been found.

1st September 2016

Grineaux Accountants Ltd

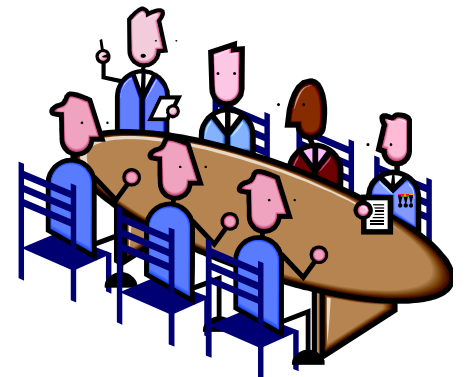
20 Market Hill
Southam
Warwickshire
CV47 0HF

GRINEAUX
ACCOUNTANTS LIMITED



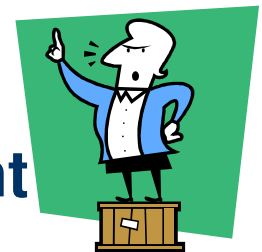
Election of Committee

- No changes
- No new nominations
 - Really would like to see some new blood
 - Interested? Come along to a meeting – no obligation, come along on a Tuesday morning
 - Tell your neighbours, friends – anyone retiring? newcomers to the town?
 - It's not painful !!!
 - At the risk of annoying my fellow Committee Members we need some new blood
- Vote



Any Other Business

- **Membership subscriptions due – Gift Aid**
 - Forms available – 25% extra from HMRC
 - Student membership - £5
 - Corporate Membership
 - Like to increase membership numbers – target 200
- **Cardall's Corner – any volunteers – short story**
- **Corporate Member Warwickshire Local History Society - <http://www.warwickshirehistory.org.uk/>**
- **Re-iterate – we really would like to see more members, AND new faces on the Management Committee – it's a great time to join!**



Wrap Up

- Thank you all for coming
- And now ...
 - An opportunity to pay your membership sub!
 - Buy your copy of “Historic Southam” 2017 Calendar, or two!
 - Remind friends, relations of all they are missing
 - Buy a copy of “Southam through the Centuries”
 - Bring up any issue you wish – Volunteer even!
 - Have a drink on us!!

